

# Compliance 101: Strategies for a Self-Sustaining Travel Registry

Tim Wojoski  
Technical Services Manager

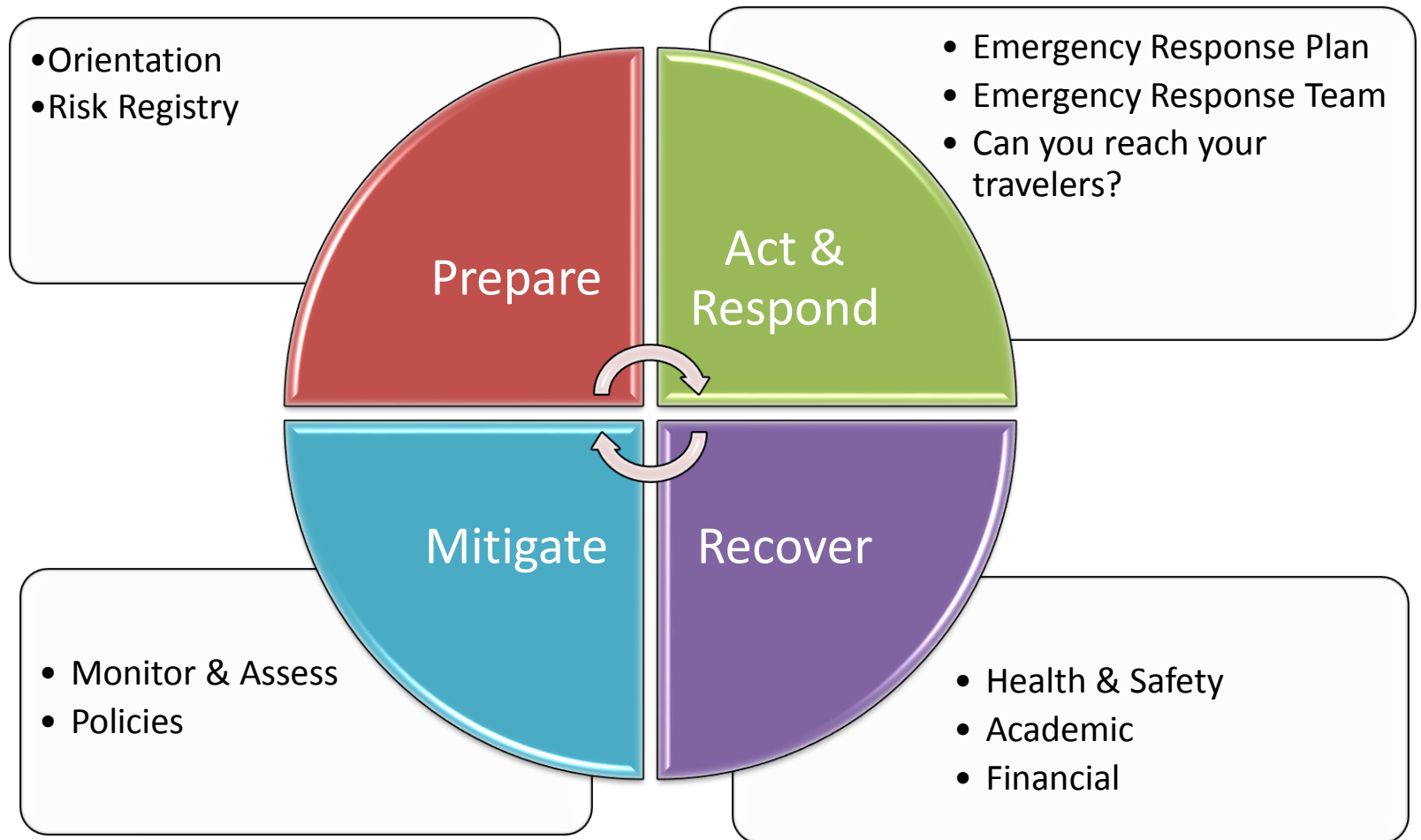


# Institutional Trends

Greatest Concerns for Institutional Risk Management	2011	2012	2013
Aggressive Program Growth	36%	18%	9%
Expansion of opportunities into the developing world, where risk types and resources vary	27%	27%	45%
Increase in short-term or faculty-led programming, implying less infrastructure support and training	9%	36%	9%
Uneven approaches to health and safety across programs or travel types	64%	36%	64%
Increased publicity and attention surrounding international activity, equating to increased accountability	18%	18%	36%
Lack of institutional framework for managing risk	9%	0%	0%



# Risk Management Cycle



# What Approach?



# Compliance Strategies

- Funding Authorization
- Policy
  - Inclusive via Faculty Committee
- Checkpoints
  - Health Clinic
  - Reimbursement
  - Authorizations



# WIIFM

It's sister – “Why should I care?”

- Research linkages
- Making Travel Easier
- Insurance Coverage
- Destination Based Messaging

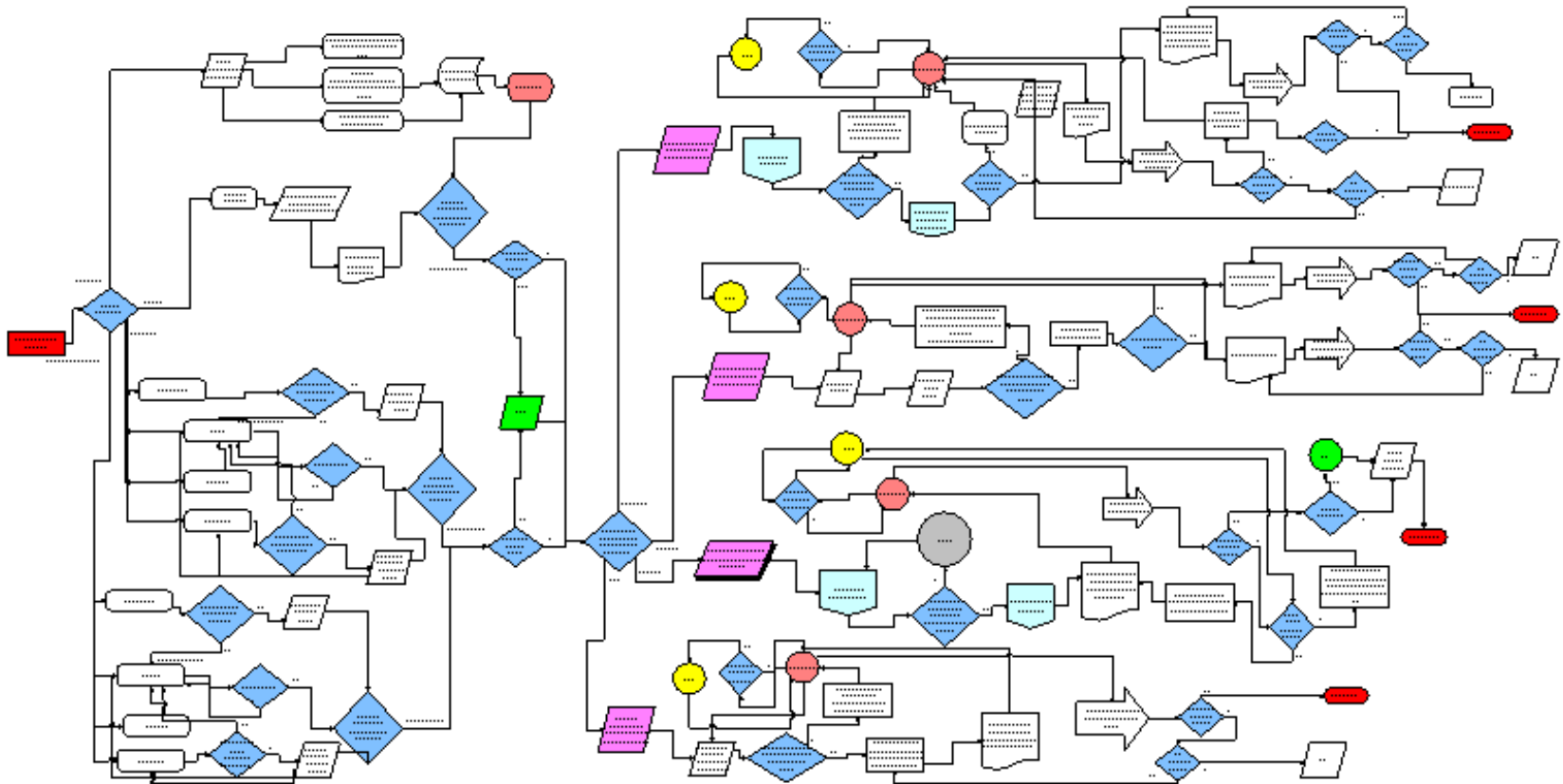


# Visibility

- Where is the Registry?
- Is it supported by Policy?
- How is it communicated?



# Streamline the Process





# Ensure a Good User Experience

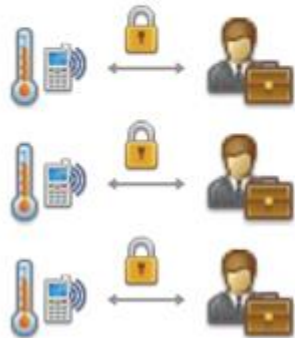
- Text Interface Changes
- Audience Specific Messages



# Pull Data out of Silos

- Travel Authorizations
- HR
- Social Media

## Machine to Machine



data silos → open data

## Internet of Things

